



Aluminium boats



**LINDER - GREETINGS FROM SWEDEN!**

## CONTENTS

Aluminium boats from Småland	4
Ella Micalsen	6
Truly recyclable!	10
Arkip 530 BR	12
Arkip 460	16
Sportsman 445 Max	20
Sportsman 445 Catch	22
Sportsman 445 Basic	24
Sportsman 400	26
Sportsman 355	30
Fishing 440	32
Going electric	34
Fishing 410	38
Inkas canoes	40

# LINDER – PLEASURES GREAT AND SMALL



DISCOVER INKAS PAGE 40-43

REPORTAGE ELLA PAGE 6-9



GOING ELECTRIC PAGE 34-35

## ALUMINIUM BOATS FROM SMÅLAND

Linder's products rest on, and spring from, a rather robust philosophy shaped by many generations of thrifty, down-to-earth people. We produce "smartly". Little is wasted. A "trend" that has been a centuries-old way of life in the region where we work. Furthermore, we make our boats and canoes from a material that can be recycled time after time – aluminium.

### THE WORLD'S MOST COMMON METAL

Aluminium is extracted from bauxite and is the most common metal in the Earth's crust. Its wide availability has made it popular for many uses. Everything from foodstuffs packaging and cars to aircraft and boats. Despite its availability, aluminium, unlike plastics, has its own "cycle". Producing aluminium from bauxite ore requires a lot of energy. However, as early as when it comes to be recycled for the very first time, aluminium is already more energy-efficient than other materials.

Aluminium has many design advantages. It is light, but strong. Not least importantly, it does not corrode easily.

### A FORM-STRETCHED HULL

Aluminium has yet another major advantage as regards, for example, designing bodywork, beams and, as here, hulls – it is exceedingly formable.

Linder aluminium boats are made using so-called "form stretching". The sheet metal for the hull is shaped (stretched) around a form. This form produces the familiar, soft and harmonic lines that constitute one of our trademarks. This forming technology saves energy because it tempers most of our aluminium alloys. Consequently, the sheets do not need to be heat hardened.

Where other manufacturers use welding, or in the worst cases, riveting to join hull sections, Linder has a different approach. We join both sections using screws and a unique keel profile. The seal is so precise that, as neither light nor oxygen can get to the sealing compound, there is no ageing. Our production methods give a superior finish that has fewer joins and thus reduces the risks of leaks and wear.

### STABLE, SEAWORTHY AND SAFE

Our combination of well-chosen material and well-designed hull profiles means that our boats are extremely seaworthy. Years of feedback from

satisfied customers and masses of tests by, amongst others, the boating press, testify that our boats are appreciated for their stable and safe design.

### A NATURAL CHOICE

Today, we make two different classes of boat (planing and row) and canoes. Our boats and canoes have much in common. They are extremely seaworthy, unsinkable and, nonetheless, light. A Linder boat gives you more speed with less horsepower. This is guaranteed by aluminium's unique properties in combination with our hull profiles.

Our range include boats driven by motors from 2.5 hp to 100 hp – speeds from a few knots to a full 38. No matter what your needs, we can meet them with slightly smaller motors!

### YOU CHOOSE THE MOTOR

Unlike boats from a number of other manufacturers, a Linder gives you the freedom to choose the motor supplier you prefer. In certain markets, the choice of motor may vary depending on the importer's partners.

### LINDER ACCESSORIES

When you choose a Linder aluminium boat or an Inkas, you have made a choice that you can use for a long time. You may, perhaps, start with one of our small boats and then eventually move up a class. Whatever your choice of craft, there is Linder Original, a vast range of the highest quality functional accessories to bring even more pleasure to your ownership. A cover, a replacement for a lost bilge drain plug, motor mounts, oars, paddles... Or why not treat yourself to a solar cell unit for a Fishing 440?



Our boats and canoes are approved by DNV – Det Norske Veritas ([www.dnvgl.com](http://www.dnvgl.com)).

Our boats are Securmark security marked. Securmark offers Scandinavia's most complete system for boat marking. Boats are marked with small microdots that contain an ID number. They are located at several places in the boat ([www.securmark.se](http://www.securmark.se)). All costs for registering this security marking are paid by Linder. All you have to do is register your boat (over the internet or using the form that comes with the boat).

I first met Ella in September 2020. That was in Eriksberg, at a photoshoot for Linder. One thing was immediately clear. Ella has great energy. She has converted this into a life full of variety and excitement. A host of interests has been partnered by a good number of challenges.

**N**ow, almost a year later, we are busy (very) chatting. Although Ella is in the middle of starting a company, the focus today is on chanterelles.

“As a fishing guide for so many years at mushroom time, it’s been ages since I could harvest the forest’s bounties.”

Topical but, as far as we can, let’s tell her story from the beginning.

“I’ve been driving boats since I was 4!”

Yes, boats feature prominently. Ella has wide experience as a qualified deck officer

## “I’VE BEEN DRIVING BOATS SINCE I WAS 4!”

for boats of up to 20 tonnes\*. This was a requirement for the years devoted to being a fishing guide. We frequently return to this in our conversation.

There was boat racing too. Swedish Thundercat championships, national champion in her class, the Roslagsloppet race... Ella thrived as a competitor.

As we chat, it becomes increasingly evident that Ella is passionate about wellbeing and everyone having a good life. Achieving this sometimes requires support. To this end, Ella qualified independently as a holistic development coach and has met many people in this role. She combines it with her great love – fishing.

Right from the very start, meeting people was intended as a related, but slightly different, career path. On becoming a fully qualified practitioner of traditional

Chinese medicine and acupressure, Ella’s life took a new turn. One day, she was run into at traffic lights. Serious whiplash injuries entailed months in convalescence and, finally, the realisation that some of the work in being an accupressurist involved too much strain for her. She had to reconsider and reshape things.

## “I DECIDED TO BECOME A FISHING GUIDE!”

There followed fishing guide programmes and courses at Tornedalen’s independent adult education college as well as youth leader training from Sweden’s Sport Fishing and Fish Conservation Association. It was then time to pull on the thinking cap. Ideas crystallised and Ella started to explore the opportunities for disabled people to experience the magic of fishing and the countryside.

“Not so many. Well, none at all!”

A sketchpad was soon full of, amongst other things, an imaginary lake with ramps adapted for wheelchairs. This was how Ella came to combine her boat and fishing interests with coaching. Her guiding also took on yet another dimension, namely, inspiring more women to face the challenges and get out onto the water. Further ticks on her CV include fishing guide and camp manager in northern Norway (the Røstøyan islands in the Lofoten archipelago).

## FUN FISHING?

Ella’s vast interest in fishing emerged in our forty-eight hours in Eriksberg. The daylight was a little too bright for the pike to be biting well. So, with cameras being ▶



## ELLA MICALSEN

– fishing guide, coach and Duracell Bunny



put away at the end of day two and the sun sinking to the horizon, Ella continued the hunt along with another fishing celebrity, Evelina. In two days of targeted fishing, these stars totalled some 20 catches (and releases).

I ask about 'fun'. Does she sometimes catch fish that end up on the table? Ella answers in the affirmative. Good, yours truly feels slightly better acquainted with that sort of fishing. It leads us into talking about various types of sport fishing.

"I have a new passion – touch ledgering!"

She names some west coast wrasses that are unknown to me (ballan, brown and cuckoo). A little later, she mentions

## "I HAVE A NEW PASSION – TOUCH LEDGERING!"

some more familiar flatfish. Just around the corner, there is the Øresund Fisherman's Cup, a flatfish competition for ledger fishers.

"I'll have to stand on tiptoe the whole time. The railings are too high for me."

### NEW COMPANY...

The sketchpad has now been replaced by a computer keyboard. Ella is writing a business plan.

"The timing feels right. People are finding their way back into the open air... after the pandemic."

She relates how she has had good support from Nyföretagarcentrum (an organisation that helps start-ups) and a mentor. I ask the obvious follow-up question: what will Ella's company be offering?

This triggers her loquacity. It is apparent that, for example, she will be focusing on the countryside and wellbeing. Ella's words include "outdoor", "northern lights trips" and the obvious "fishing", "coaching" and "personal development". She also mentions offerings

to attract groups of women. For the time being, she does not intend to reveal the name of her company.

Thus, I ask some questions about her 'leisure time' and immediately suspect it is not really something that can be isolated in Ella's life. For her, 'leisure' and 'work' are more like communicating reservoirs.

"Well, I'm writing a book. It's about personal development."

This confirms my suspicion. Ella



then also mentions that she's a singer-songwriter.

In response to my 'Aha!', she adds that, being therapeutic, songs and music are yet more tools for promoting own and others' wellbeing!

### ARKIP 460 AND A HONDA

Talking with this Duracell Bunny is so interesting that I nearly forget the theme for our meeting – Linder!

"It's really cool to be, in my own way, a part of Linder."

She discloses how much value she puts on Linder being a family company: "The name in itself is a mark of authenticity and quality."

Ella has a specially equipped Arkip 460 with a 50 hp Honda outboard motor. She enthuses about the boat's "seaworthiness", "ruggedness" and, in particular, how she can: "Handle it easily alone, get it on a trailer and launch it off the west coast or in a lake. The draft is shallow too!"

\*Deck Officer Class VIII: can command vessels of six metres or more in length with a "gross tonnage" of 20 tonnes and take a maximum of twelve passengers aboard on internal routes.

Visit [www.linder.se/en/ella](http://www.linder.se/en/ella) to see how Ella has equipped her 460.

## A LINDER BOAT IS TRULY RECYCLABLE!

It has long been held that a product's best environmental argument is its durability.

A Linder boat or a Linder canoe, an Inkas, has a long service life. We do not know exactly how long. Our aluminium products have, so far, been around for "only" a little over 40 years!

Right from delivery, a Linder boat comprises at least 50 percent recycled materials. As our products are almost 100 percent recyclable, it also meets future requirements in respect of producers' liability. Consequently, it stands head and shoulders above modern, plastic boats. The remnants of these can, at best, only be burnt. This generates far from desirable contaminants.

Linder is one of the few small boat manufacturers using buoyancy elements made of polyethylene foam. This thermoplastic can be recycled or, for the purposes of energy recovery, freely burnt with no toxic gases being given off.

Is it business madness to build, like Linder, products that may last a full generation? We do not think so. Quality in every detail and recycling benefit more than Linder and Linder customers alone.



## ARKIP 530 BR – A BIGGER ADVENTURE

An Arkip 530 BR (bow rider) is a full 214 cm wide. It is also 530 cm long (576 cm with a bathing platform) and, consequently, a large boat with a flexible layout and room for up to 6 people. A boat that is ideal for long sea trips.

Harmonic lines and a low, 16° hull angle (created using Linder's hallmark concept of a form-stretched hull with gunwale) give the Arkip 530 BR not only stable and well-balanced handling, but also striking beauty. The low angle means that the Arkip 530 BR does not have a planing threshold – it planes more or less immediately.

Despite its weight (610 kg), two people can easily get an Arkip 530 BR onto a trailer. If you are looking for a boat that is easy to get to wherever your waterborne adventures are to begin... This is the one!





As standard, the Arkip 530 BR is richly equipped.

Double console with door, gas-sprung flip-up comfort seats, hydraulic steering, 9-inch GPS/sonar, integrated step, substantial bathing platforms with integrated ladder, self-bailer, fixed fuel tank, foldaway cover box and ten other stowage spaces (two anchor lockers included therein) are just some examples.

With a 100-hp motor (which is more than other models in this size class are approved for), you can reach up to 38 knots.

An Arkip 530 BR can also be equipped with, for example, a sun/fishing deck and a water skiing tow bar. Visit [linder.se](http://linder.se) to read everything about the Arkip 530 BR and customise it to your needs.





## ARKIP 460 – CLASS WINNER

With an Arkip 460, you are ready for anything. Open seas, sheltered coasts, jetties, lakes, near, far – go wherever fancy takes you.

A 12° hull angle makes this a family boat that readily planes and has room for up to 5 people. As the name indicates, it is 460 cm long. The ample, 185 cm width makes this a boat with lots of space. Furthermore, its low weight (292 kg) ensures that you can get it onto a trailer whenever you want and go to whichever waters are calling you!

Its robustness aids launching. An Arkip 460 is ideal for sports, fishing, simply enjoying being out on the water or powering your voyages of discovery. Like all our boats, it is almost completely recyclable and satisfies future requirements in respect of producer liability.

Praised for its seaworthiness, the willing and responsive Arkip 460 demands something of you – a little seamanship. Use a 50-hp motor and you can reach 33 knots!





The Arkip 460 is equipped as standard with, amongst much else, a steering console, a 9-inch GPS/sonar, a sturdy toe rail, easy-to-grip grab rails, aluminium floor grid, bathing ladder, automatic bilge pump, 150 cm rod box, navigation lighting (LEDs in the bow) and ample passenger and storage space. An Arkip 460 can be equipped with a left console, a sun/fishing deck and a water skiing tow bar.

Visit [linder.se](http://linder.se) to read everything about the Arkip 460 and customise it to your needs.

## SPORTSMAN 445 MAX – THE VERSATILE PLEASURE BOAT

Sportsman 445 Max is one of three boats in a family that, despite its name, measures a full 451 cm.

Flexible, versatile and with room for up to 4 people, the 445 Max is a boat that makes no compromises. Fishing trips, sports outings or just socialising with friends – it meets many needs. However you choose to use your 445 Max, it is a well-equipped pleasure boat with a wide, 175 cm hull that has lots of space. A boat that, besides giving many years of pleasure, is typical of how we respond to what our customers have asked of us. The low weight (227 kg) gives you the freedom to load up and head off to new waters.

As standard, 445 Max's equipment includes a console with recessed GPS/sonar, an aluminium floor grid, bathing ladder and automatic bilge pump. 445 Max also has an electrical system, easy-to-grip grab rails and four stowage spaces (one of these being in the bow deck).

Visit [linder.se](http://linder.se) to read everything about the 445 Max and customise it to your needs (e.g. as a fishing platform). Choose a motor of up to 30 hp or, if you want to be at the forefront of developments, an electric motor is also available.





## SPORTSMAN 445 CATCH – FOR ALL WEATHERS

The Sportsman 445 Catch has room for 3 people. Developed for and by sports fishers, it is a pure-bred boat for enthusiasts. The motivation to put all our experience into building the ultimate fishing boat came from so many of our other boats already being used for fishing. It comes fully equipped and ready to go with, amongst much else, a console, recessed GPS/sonar, lots of stowage space, a generous fishing platform in the bow and useful areas in the stern.

The 445 Catch is a boat for all weathers and situations. Having basically the same hull as the Sportsman 445 Max, seaworthiness and easy propulsion are guaranteed. Add the remote-controlled electric motor in the bow and you have full command. At only 252 kg, a Sportsman 445 Catch delivers easy trailering, ready access to all our waters and rapid response when the mood so takes you. Fishing chairs and a mat are amongst the accessories for the 445 Catch.

Visit [linder.se](http://linder.se) and check out the entire accessories list for the 445 Catch.

## SPORTSMAN 445 BASIC

If you want to use a Linder boat as an out-and-out workhorse, a little less luxury but even more utility, then there is the stripped-down version, the Sportsman 445 Basic.

Oars are included, but visit [linder.se](http://linder.se) and customise it to your needs – perhaps grab rails and a fishing platform!





## COMPACT SPEED



## SPORTSMAN 400.

Four metres long but roomy, the Sportsman 400 is a multifaceted boat that weighs 125 kg and has an ample, 164 cm wide hull. Despite the compact format, it is still a planing boat for 4 people. Throughout the years, it has been appreciated by young, old, enthusiasts, families and keen sports fishers alike. It gets you to places that are outside the reach of other boats. You can speed off into sheltered offshore waters or creep up on nature in shallows and narrow channels. The strength of the material means you can

go where plastic boats have to give up. Fishing trips or pleasure outings, this boat is equally at home. The hull ensures stable progress and, even with a small motor, high speeds.

Sportsman 400 is one of the few boats in its size class that manages water sports with just a 20-hp motor. It is delivered with aluminium oars included.

Sportsman 400 can additionally be equipped with, amongst other things, a steering console, aluminium flooring, bow deck, toe rail and grab rails. Visit [linder.se](http://linder.se) and select precisely whichever accessories you would like.





## SPORTSMAN 355 – FOR HARD USE

The Sportsman 355 is a miracle of robustness. This particular model is often subjected, perhaps a little unjustly, to heavy handling. It can take it!

Approved for three people, the boat is light (84 kg) and, with a 146 cm width, unexpectedly roomy.

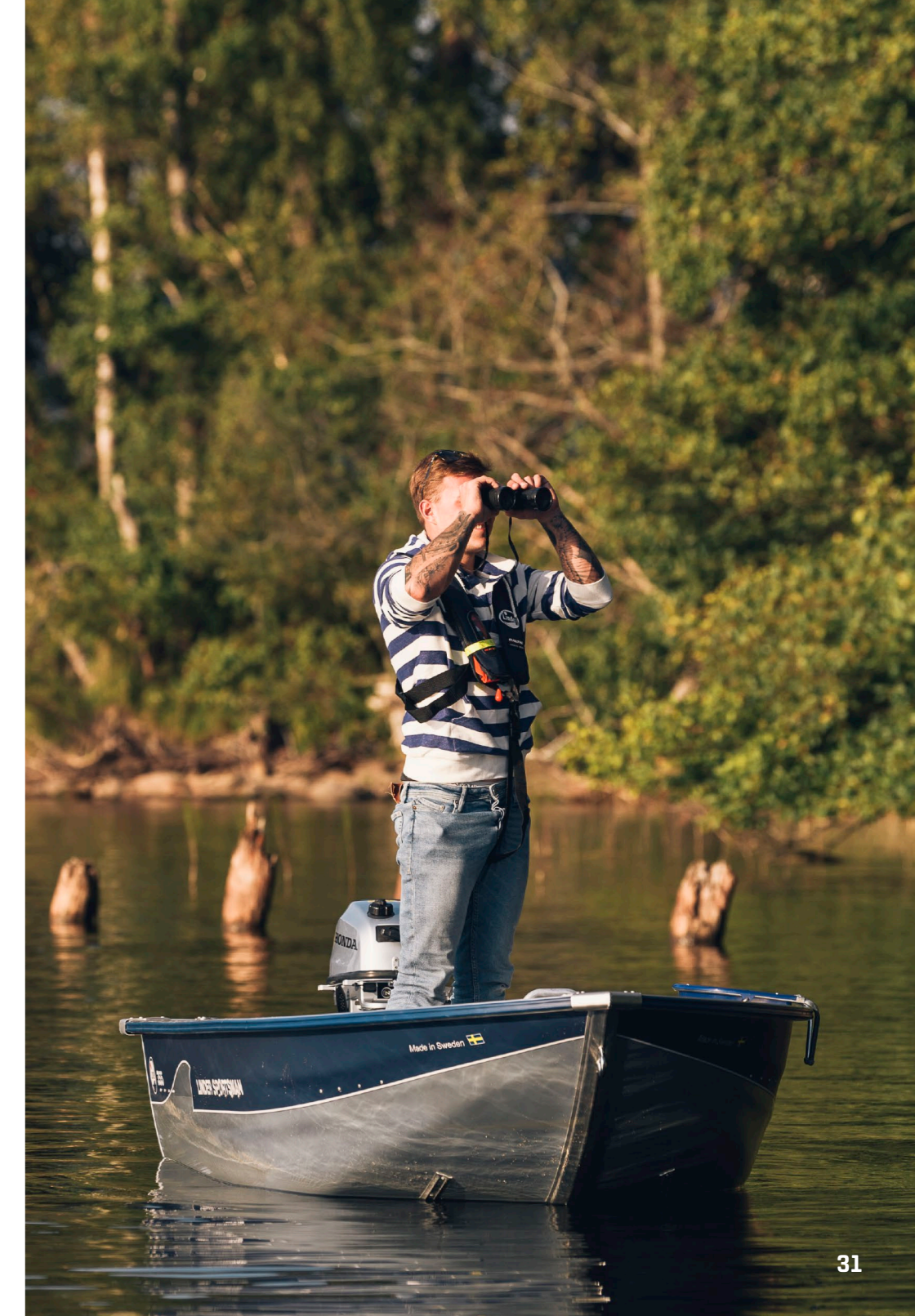
With a Sportsman 355, you choose to give up a little speed for even more rugged navigability.

An appreciated workhorse for many, a rescue boat for some, a birdwatching platform for others... Take it with you to lakes, larger streams and quiet river stretches. Use it. Load it, pack it, work it. Land wherever you want!

An 8-hp motor gets you around easily. Nonetheless, the low weight still guarantees a little wind in the hair, 19 knots goes a long way.

Oars are included. Choose which motor you want and, if you wish, add extras such as wooden flooring and grab rails to your Sportsman 355.

Visit [linder.se](http://linder.se) and select the optional extras you want for your Sportsman 355.







## FISHING 440 – A LITTLE CLOSER TO NATURE

## ELECTRIFICATION IS HERE TO STAY

We offered electric motors for our boats very early. Many years have passed since then. Development has been rapid. What was initially a little exotic in its peaceful quietness was then reserved for our small models. Now, batteries have taken large strides forward.

**D**id you know that the world's first car was electric? Many years of research and development may have been lost, but the technology has now arrived.

Electric motors have many advantages. Unlike petrol engines, they deliver constant power (torque) at all speeds.

This gives you almost silent propulsion and, yes, no exhaust fumes. Furthermore, with small stern-mounted motors, you have fantastic precision for tight manoeuvring.

Large bow-mounted motors also give you some of this advantage.

The running time/range of electric motors was long the major disadvantage. This is no longer as great, if not entirely gone. The rapid development of battery technology is the reason. Prices are also moving down. Still, it has to be said that powering a Sportsman 445 Max electrically does require a higher outlay than starting off with a 4-stroke in the stern.



### SEVERAL OPTIONS

Battery-pack development has brought a reduction in size and increases in power and running time. Torqeedo's Deep Blue range of outboards is one example. This offers 40 and 80 hp models.

### GREATEST POSSIBLE PEACE

Our Fishing 410 or 440 with a small electric motor lets you fully experience nature's grand soundtrack. Peace punctuated by the calls of black-throated divers and the ripples of rising fish.

When you choose a Linder boat, you are making a conscious choice.

Equipping it with electric drive and a solar cell unit is yet another pinpoint pick. For you and the environment. Putting the two together, the pleasure is palpable – the greatest possible peace.

Visit [www.linder.se/en/electricmotors](http://www.linder.se/en/electricmotors) and follow the innovations we are constantly adding to our range.





## FISHING 440 – TIMELESS DESIGN, LIFELONG OWNERSHIP

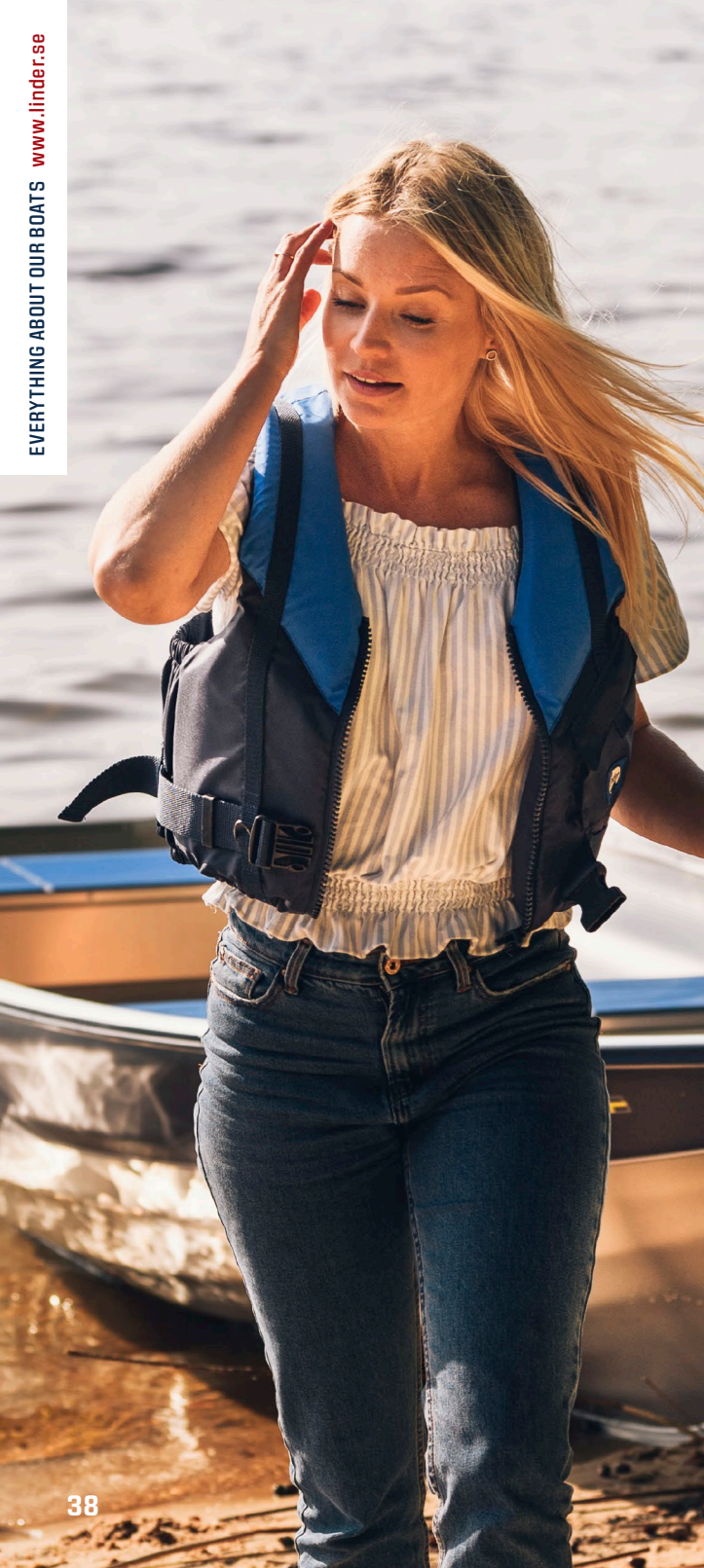
Quality is timeless. Few of our boats better encapsulate our philosophy. Inspired by the classical wooden skiff, we created a light and stable rowboat measuring a full 431 cm. Its hull shape makes it easy to propel, highly manoeuvrable and, consequently, safe. Despite the boat's low weight (94 kg), our unique keel profile ensures great course stability.

Approved for up to 4 people (amply accommodated by the 164 cm wide hull), this is a boat for quiet lakes, getting effortlessly close to nature and experiencing its joys.

As with all our models, a Fishing gives you the advantages of aluminium. Using either the included oars or a small outboard of your choice, the low weight is even more evident here. Alternatively, why not go green and choose a Fishing 440 with a solar cell unit and electric motor? Wooden flooring and grab rail are amongst the other options.

Visit [linder.se](http://linder.se) and explore the accessories you can choose for your Fishing 440.





## FISHING 410 – SIMPLICITY AND NATURALNESS

There are times in our lives when we are by ourselves, yet not alone. You can easily handle a Fishing 410 alone, both on water and while transporting it around on land. And, yes, there are also boats for all occasions and situations. Fishing 410 is especially appropriate for some of these. The boat's low weight (75 kg) and robust 4-metre length make it very easy to row. It also holds 3 people and is ideal for taking friends on lake trips.

Somewhat smaller than the 440, the 410 is still a full 156 cm wide and, as a result, roomy. It simultaneously offers slightly more mobility and, thanks to the keel profile, the same unexpectedly high course stability – easy propulsion and lots of time to enjoy the experience.

Few boats are as easy to own as the Fishing 410. The closest competitors are in our own ranges. For quiet lakes and watercourses, a 410 is the right choice for you, perhaps accompanied by a partner or close friend. A 410 can be propelled by a small motor. Choose an electric drive if you want to enjoy the silence! The aluminium oars are included. However, fit your boat out precisely to your needs – wooden flooring, grab rails, etc.

Visit [linder.se](http://linder.se) and explore the accessories you can add to your Fishing 410.





## INKAS – A FREER LIFE!

We recommend that you give canoeing a try. Few other pastimes in our stressful world get you nearer to yourself – and to those you share the experience with. An Inkas is effortless propulsion, often in places that cannot be reached in any other way.

Made from a material with its own environment-friendly cycle, an Inkas canoe is the wisest choice you can make for getting around the most sensitive of environments. Its low weight and hull shape make navigation easy, even in narrow channels.

Since its launch in 1981, Inkas has been appreciated for its extreme robustness. Dejected paddlers, their canoes unable to withstand the perils of flowing waters, are a rarity nowadays. An Inkas withstands a lot and is thus a favourite with rental operators.

An Inkas is seaworthy and unsinkable. It puts you and the environment in first place.

Inkas canoes are available in 3 lengths – 465 cm, 495 cm and 525 cm. Width is up to 35 cm and there is room for 2 or 3 people. As weight is always low (28 to 38 kg), handling your Inkas is easy.

Visit [linder.se](http://linder.se) and choose exactly the Inkas model and accessories you need.







Made in Sweden



Linder Aluminiumbåtar AB  
Kanotleden 5  
SE-362 32 Tingsryd  
Sweden

Tel: +46 477 190 00  
Email: [info@linder.se](mailto:info@linder.se)

Visit [www.linder.se](http://www.linder.se)  
for lots more information,  
accessories and good advice.



Aluminium boats