

OUTBOARD MOTORS 2017



**7 YEAR WARRANTY NOW
OFFERED ON ALL TOHATSU
MANUFACTURED OUTBOARDS**

From Japan to The World

Tohatsu's sole factory, located in the city of Komagane in Nagano Prefecture, Japan, boasts the world's largest production capacity for outboard motors. Engines manufactured in Komagane are exported to over 100 countries, via over 90 distributors, across the globe.

Despite recent trends to outsource production to other countries, Tohatsu strives to keep all manufacturing in Japan. By doing so, Tohatsu will continue to deliver reliable outboards and specialty products that live up to the "**Made in Japan**" standard.

 TOHATSU



HISTORY AND QUALITY

Tohatsu manufactured its first outboard motor, a two-stroke 1.5hp engine, in 1956. Over the years, Tohatsu began to develop larger horsepower outboards, and new environmentally friendly technology. In 1998, Tohatsu introduced its first four-stroke, which was a 5hp outboard. In 2000, TLDI technology, also known as Two-stroke Low pressure Direct injection, was introduced into the market. Current Tohatsu production includes four-stroke motors, from 2.5hp through 50hp, and conventional two-stroke outboards, from 2.5 through 115hp, for many countries. As pioneers in Japanese outboard motor manufacturing, our high quality, durable, environmentally friendly products are highly acclaimed by customers in every country. Tohatsu is committed to introducing new products and technology into the market, as the times and needs of our customers evolve.



MFS50/40



Lightest weight in its class

MFS50/40 consist of 3 concepts, Lightweight, ECO and Sporty.

They are the lightest weight in their class and offer exceptional fuel performance and proven technologies for worry-free boating.



Multi-Function Tiller Handle (Option)

It offers smooth control and easy operation having key-switch, big-shift handle, & trim/tilt switch on a big tiller handle.



Variable Idling Control

Idling / Trolling speed can be adjusted in four rpm ranges (650,750,850,950 r/min) by pressing a key-switch.



Water Flushing System

Comes standard with a convenient built-in freshwater flush system that simplifies routine engine flushing.



TOCS (Tohatsu Onboard Communication System)

TOCS supports communication between other standard electric devices onboard by simple plug and play.



Tachometer



Speedometer



Trim Meter



Fuel Meter



Volt Meter

SUPREME

GREATER LOOK, GREATER PERFORMANCE, GREATER USABILITY



FourStroke

MFS40/50 achieved 5,000km expedition

MFS40/50 have achieved a complete 5,000 km operation under extreme conditions without any machine trouble in Lena River (Russia). This expedition also proves that MFS40/50 delivers excellent durability and performance.



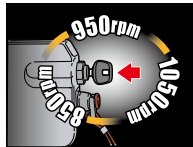
MFS30/25

Despite lightweight and compact, MFS30/25 delivers powerful performance. This model is equipped with industry leading technology, battery-less Electronic Fuel Injection.



Battery-Less Electronic Fuel Injection

The 30 ps and 25 ps have the industry's first battery-less electronically controlled fuel injection that provides quick throttle response, excellent fuel economy and very smooth rides on the water.



Variable Idling Control

Idling / Trolling speed can be adjusted in three-rpm ranges (850, 950, 1050 r/min) by pressing a key-switch.



Multi-Function Tiller Handle (Option)

It offers smooth control and easy operation having key-switch, big-shift handle, & trim/tilt switch on a big tiller handle.



New Gear Ratio

Now offers wide selection of propellers Gear Ratio (12:26 / 2.17) to be capable of using bigger propellers.



TOCS (Tohatsu Onboard Communication System)

TOCS supports communication between other standard electric devices onboard by simple plug and play.



Tachometer



Speedometer



Trim Meter



Fuel Meter



Volt Meter



POWERFUL PERFORMANCE, EXCEPTIONAL FUEL ECONOMY
ROBUST

HAVOC

TOHATSU
FourStroke

30



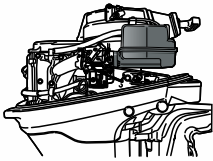
Water Flushing System

Comes standard with a convenient built-in freshwater flush system that simplifies routine engine flushing.

FourStroke

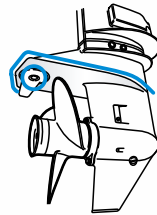
MFS20/15/9.8/8/6Z

Powerful, yet lightweight, MFS20/15 are a great choice for many boaters. You can expect the same level of performance that our other engines deliver. Power tilt can help you, which is available from MFS9.8 to upper models.



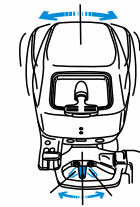
Air-silencer system

Our air-intake system has a large volume air silencer to ensure engine starting and to suppress air-intake noise during engine operation.



Wide anti-cavitation plate with trim tab

The wide anti-cavitation plate effectively restrains the propeller from cavitating. The large trim tab helps to achieve effortless steering at high speeds while also providing corrosion protection.



Simple steering friction lever

The steering friction lever, located at the front of the motor, allows the steering friction to be adjusted for both steady running at high speed and easier maneuvering while trolling. (tiller model only)



HIGHLY EFFICIENT IN BOTH FUEL AND PERFORMANCE

EFFICIENCY



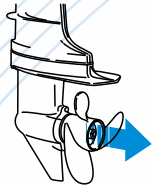
Front shift

The shift lever is located at the front of the motor for easier operation.

FourStroke

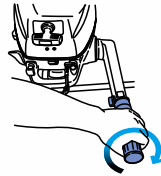
MFS6SP/6/5/4/3.5/2.5

MFS6/5/4/3.5/2.5 are portable models. They demonstrate user-friendly functions for easier operation. Throttle grip, propeller hub exhaust and choice of integral or separate tank offers high performance and personal choice.



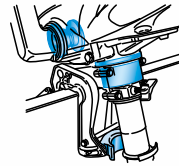
Propeller hub exhaust

Through-the-prop exhaust is used to achieve nice, quiet running conditions.



Throttle grip

The twist type throttle control provides quick steering as well as one-handed operation capability.



Four point dampening system

The specifically designed motor dampening system reduces vibration at all rpm ranges.



Carrying Handle

Wide and deep carrying handle enables you to carry easily.



FourStroke

SP

Designed specifically for sail boaters. This powerful sailboat engine, available in a "long" and an "ultra-long" shaft, has a high thrust sail drive propeller to give you the power you need. It also includes a 12V, 60W, 5A charging system for charging your battery or powering external electrical devices and its own charging cable. Sailing just got better with Tohatsu's 6hp "SP" sailboat motor!



Built-in 5 amp/12V charging system



Charging cable included



Equipped with the high thrust sail drive propeller

CONVENIENCE

Separate Tank

12L separate fuel tank enables you to cruise long distance and long time. Models available 4 & 5hp models.



Integral tank

With a built-in fuel tank conveniently located on top, 3.5 and 2.5 becomes ready for cruising quickly and without taking up extra space in the boat. Standard on 2.5 - 4hp models. Optional on 5/6hp models.

BFT 250/225/200

BFT250, 225, and 200 bring a large displacement 3.5 litre V6.

This narrow V6 design offers great torque and top end performance, as well as magnificent fuel economy.

They provide power where and when you need it, giving you a broader, flatter torque and smooth power delivery throughout the engine's operating range.



ECOMO® - Superior fuel efficiency

ECOMO® improves fuel efficiency by allowing combustion to operate on a leaner air/fuel mixture. At cruising speed, this engine runs on up to 30% less fuel* than others in its class.

*Based on EPA Specific Fuel Consumption Mode.

*ECOMO® is a registered trademark of Honda Motor Co., Ltd.



BLAST® System – improves acceleration at low speeds

Boosted Low Speed Torque, or BLAST, improves acceleration at low speeds. A quick movement of the throttle control activates the BLAST® system, advancing the ignition curve quickly. This will greatly improve “Hole Shot”.

*BLAST® is a registered trademark of Honda Motor Co., Ltd.



Variable Valve Timing and Lift Control

Variable Valve Timing & Lift Electronic Control system provides power where and when you need it. This gives you a broader, flatter torque curve and smooth power delivery throughout the engine's operating range. The result is a superior combination of power, torque and fuel efficiency.

*Only for BFT250/225



TOCS (Tohatsu Onboard Communication System)

TOCS supports communication between other standard electric devices onboard by simple plug and play.



Tachometer



Speedometer



Trim Meter



Fuel Meter



Volt Meter

FourStroke

SUPER POWER

EXCITING SPEED AND POWER

BFT



Separate Dual Air Circuits

The BFT250 has industry-first separate dual air circuits. First intake is used to cool the engine where air is drawn into the front of engine and circulated around critical engine components. A top mounted cooling fan draws cooling air over the alternator. The second intake circuit directs cooling air from the upper intake vents, separates out moisture, and then inducts it into the throttle body. This system provides for cooler, denser air for better combustion as compared to conventional under-cowl induction systems. (*only for BFT250)



Large Displacement V6

A powerful compact 24 valve Single Overhead Cam [SOHC] design. The narrow V6 design offers top performance as well as great fuel economy.

BFT 150/115

The Tohatsu in-line 4 cylinder BFT150 and BFT115 four stroke outboard offers top class fuel efficiency while maintaining power and smooth cruise. The Variable Valve Timing and Lift Control system provides power where and when you need it, giving you excellent low-end torque and top end speed. The result is a superior combination of power, torque and fuel efficiency.



ECOMO® - Superior fuel efficiency

ECOMO® improves fuel efficiency by allowing combustion to operate on a leaner air/fuel mixture. At cruising speed, this engine runs on up to 30% less fuel* than others in its class.

*Based on EPA Specific Fuel Consumption Mode.

*ECOMO® is a registered trademark of Honda Motor Co., Ltd.



BLAST® System – improves acceleration at low speeds

Boosted Low Speed Torque, or BLAST, improves acceleration at low speeds. A quick movement of the throttle control activates the BLAST® system, advancing the ignition curve quickly. This will greatly improve “Hole Shot”.

*BLAST® is a registered trademark of Honda Motor Co., Ltd.



Variable Valve Timing and Lift Control

Variable Valve Timing & Lift Electronic Control system provides power where and when you need it. This gives you a broader, flatter torque curve and smooth power delivery throughout the engine's operating range. The result is a superior combination of power, torque and fuel efficiency.

*Only for BFT150



TOCS (Tohatsu Onboard Communication System)

TOCS supports communication between other standard electric devices onboard by simple plug and play.



Tachometer



Speedometer



Trim Meter



Fuel Meter



Volt Meter

FourStroke



Multi-port Programmed Fuel Injection (PGM-FI®) – Powerful Performance

A powerful compact 16 valve Double Overhead Cam [DOHC] design. PGM-FI® delivers the precise amount of fuel/air to each cylinder. It offers top performance as well as great fuel economy.

*PGM-FI® is a registered trademark by Honda Motor Co., Ltd.

SLEEK
SMOOTH AND POWERFUL
BFT

BFT 90/75/60

BFT90, BFT75, BFT60 are among the lightest in this class. They deliver exceptional torque and power by advanced technologies. The Lean Burn Control, in addition, will get you better fuel economy while at cruising speed.



ECOMO® - Superior fuel efficiency

ECOMO® improves fuel efficiency by allowing combustion to operate on a leaner air/fuel mixture. At cruising speed, this engine runs on up to 30% less fuel* than others in its class.

*Based on EPA Specific Fuel Consumption Mode.

*ECOMO® is a registered trademark of Honda Motor Co., Ltd.



BLAST® System – improves acceleration at low speeds

Boosted Low Speed Torque, or BLAST, improves acceleration at low speeds. A quick movement of the throttle control activates the BLAST® system, advancing the ignition curve quickly. This will greatly improve “Hole Shot”.

*BLAST® is a registered trademark of Honda Motor Co., Ltd.



Variable Valve Timing and Lift Control

Variable Valve Timing & Lift Electronic Control system provides power where and when you need it. This gives you a broader, flatter torque curve and smooth power delivery throughout the engine's operating range. The result is a superior combination of power, torque and fuel efficiency.

*Only for BFT90



TOCS (Tohatsu Onboard Communication System)
TOCS supports communication between other standard electric devices onboard by simple plug and play.



Tachometer



Speedometer



Trim Meter



Fuel Meter



Volt Meter

VERSATILE AND DEPENDABLE

BFT



FourStroke



Multi-port Programmed Fuel Injection (PGM-FI®) – Powerful Performance

A powerful compact 16 valve Single Overhead Cam [SOHC] design. PGM-FI® delivers the precise amount of fuel/air to each cylinder. It offers top performance as well as great fuel economy.

*PGM-FI® is a registered trademark by Honda Motor Co., Ltd.

*BFT60 is 12 valve Single Overhead Cam [SOHC].



Multi Function Tiller Handle

Ergonomically designed shift lever offers smooth shifting for convenience and comfort. Throttle friction allows fine-tuning of the tiller for safety. Up front shift lever, PTT switch, and engine alert lamps provide added convenience.

MFS5C LPG/5CSP LPG

Sailors are no longer forced to carry petrol on board thanks to our new MFS5CLPG outboard. This LPG model offers easier starting, quieter operations and provides less maintenance on fuel related parts. Plus, it's 30% cleaner than conventional outboards. The connector is designed to fit a standard 3.9kg Propane Calor Gas bottle thus easily available UK wide.



Designed specifically for sail boaters. This powerful sailboat engine, available in a "long" and an "ultra-long" shaft, has a high thrust sail drive propeller to give you the power you need. It also includes a 12V, 60W, 5A charging system for charging your battery or powering external electrical devices and its own charging cable. Sailing just got better with Tohatsu's 5ps "SP" sailboat motor.



Connector

Connector and fuel hose meet the US standard (CGA600).



Shut-off Valve

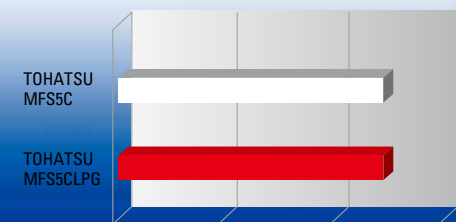
Fuel flow will be shut off when the engine stops for safety.



Top Speed

Speed (km/h)

Top speed is equivalent to Tohatsu's 5ps conventional outboard.

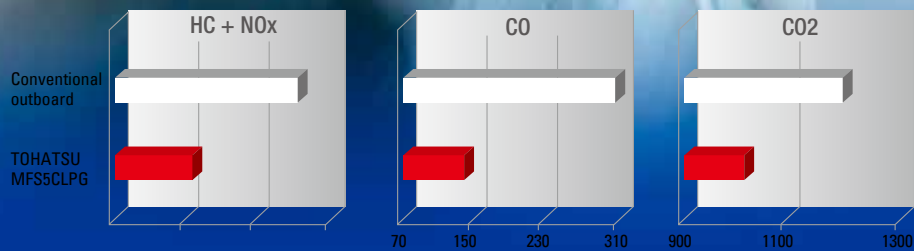


USER FRIENDLINESS



HC + Nox, CO, CO2

This model produces cleaner emissions than the conventional outboards.



Source : Research based on Engineering Dept. / TOHATSU Corp.

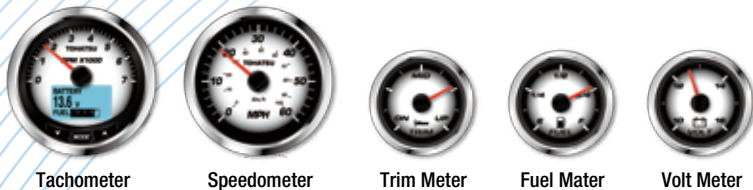
Powered by 

Genuine Tohatsu Parts and Accessories

TOCS (Tohatsu Onboard Communication System)



Plug and Play marine Gauges



Tachometer

Speedometer

Trim Meter

Fuel Meter

Volt Meter

Benefits

- 1 Tachometer supports Tohatsu genuine self-diagnostic system and displays the diagnostic result
- 2 LCD data are available in five languages*1 i.e. English, French, Italian, Spanish, & German
- 3 Pop-Up screens for quick information display and warnings
- 4 Alarm codes with suggested actions
- 5 A single Tachometer can monitor up to five fuel tanks
- 6 System compatible with multiple engines*2
- 7 Calibration of Fuel Level, Trim, and Speed included
- 8 Initialization mode to assist in gauge set-up
- 9 Superior Sunlight readable display

*1 Some features not supported

*2 Up to four engines

Sample Images



Nighttime mode



LCD display color
You can choose from 11 different colors

TOCS Starter Kit (3KY-72637-0)



Basic starter kit includes, Engine drop cable, Battery cable, Terminator (Female and Male), Tee Connector and Tachometer, and Operation Manual.
In case other gauges are needed, you can just plug in the additional gauge to display.

Applicable Models

MFS25/30C (*): Applicable for serial no. 067991AD and above
MFS40/50A: Applicable for serial no. 013179AE and above
MD30/40/50B2: Applicable for serial no. 004743AE and above
MD75/90C2: Applicable for serial no. 011819AE and above
MD115A2: Applicable for serial no. 011828AE and above
BFT Model: Applicable for all serial no.
(*): also requires Interface Cable (3KY-76133-0) for connection between ECU and engine drop cable.

Details

PARTS NO.	DESCRIPTION
3KY-72638-0	TACHOMETER KIT (includes Harness and operation manual)
3KY-72672-0	SPEEDOMETER KIT (includes Harness for SPEED)
3KY-72523-0	TRIM METER KIT (includes Harness with 4 pins)
3KY-72600-0	FUEL METER KIT (includes Harness with 4 pins)
3KY-72531-0	VOLT METER KIT (includes Harness with 4 pins)

Gauges & Meters

Premium Stylish Gauges. White or black face dial with polished stainless steel bezel, high visibility red pointer and dome glass lens.



Tachometers

These 199mm(4") 7,000 max Tachometer are available with warning lamp.
For MFS40/50 and TLDI warning lamp includes: Oil Level, Engine Temperature and battery.
For 4-Stroke warning lamp include: Low Oil Pressure.
For 4-Stroke Tachometer can be used on all electric start models by using select 4, 6 or 12 pole switch on rear of meter.
All gauges include lead wire, mounting hardware included.

Part Number	Color	Models
3GF-72647-1	Black	MFS40/50A & TLDI Model
3GL-72647-1	White	MFS40/50A & TLDI Model
3AC-72638-1	Black	4-Stroke & 2-Stroke Auto Mixing Oil Model
3AD-72638-1	White	4-Stroke & 2-Stroke Auto Mixing Oil Model



Speedometers

These Speed Meter with in M.P.H. and Km/h. Includes vinyl pipe, sender and hardware.

Part Number	Color	Description
3GF-72672-0	Black	60mph 4" Diameter
3GL-72672-0	White	60mph 4" Diameter



Water Pressure Meter

Monitors your cooling water pressure. Includes vinyl pipe and installation hardware.

Part Number	Description
3GF-72598-0	2" Diameter 0-10 PSI Black
3GL-72598-0	2" Diameter 0-10 PSI White



Trim Meter

Magnetic type gauge shown angle for optimum performance and efficiency.
2" diameter. Includes installation hardware. For use 2-wire senders.

Part Number	Description
3GF-72571-0	For 2-wire sender Black
3GL-72571-0	For 2-wire sender White



Hour Meter

Indicates readout LCD the number of hours your outboard motor has been operated to indicate when periodic services are necessary.

Part Number	Description
3GF-72524-0	2" Diameter Black
3GL-72524-0	2" Diameter White



Fuel Gauge

This 2" Fuel Gauge can help you monitor fuel level. Connects easily using your boat's fuel sending unit harness.
Part Number Description

3GF-72596-0	2" Diameter Black
3GL-72596-0	2" Diameter White



Volt Meter

Monitors your charging system. Includes harness and installation hardware.

Part Number	Description
3GF-72529-0	2" Diameter Black
3GL-72529-0	2" Diameter White

Multi Function Tiller



Part Number	Applicable Models
3GF063000-2	MD40/50B2
3NV063000-0	MFS25/30C
3KY063000-0	MFS40/50A

Propellers

The propeller selection chart can be used to help you in selecting the correct propeller for your Tohatsu outboard. Remember that in any application, discrepancies in performance can result due to the different boat hull designs, the final carrying load and your particular needs.



Model	Propeller Dia		Pitch	Material	Standard Propeller				Part Number
	mm	in			M2.5A2	M3.5A2	M3.5B2	MFS2.5B3.5B	
M2.5/3.5A2/ 3.5B2 (2-Stroke) & MFS2.5B/3.5B (4-Stroke)	188	7.4	4.5	Plastic	●		●	●	314B64103-0
	188	7.4	6	Plastic	(S,L)	(S,L)	●	●	309-64106-0
	188	7.4	7	Plastic		●	(S,L)	(S,L)	3F0-64101-0
MFS2.5B/3.5B (4-Stroke)	188	7.4	6	Aluminum	●	●			309B64107-0
	188	7.4	6	Aluminum			●	●	3F0B64512-0

Model	Propeller Dia		Pitch	Material	Standard Propeller				Part Number	
	mm	in			M4C	M5B	MFS4C	MFS5C/6C		MFS6C(SP)
M4C & 5B (2-Stroke) & MFS4/ 5/ 6C/ 6C(SP) (4-Stroke)	212	8.3	6	Aluminum	●	●	●	(UL)	●	393B64512-1
	200	7.9	6	Aluminum	●	●	●		(L,UL)	399B64512-1
MFS4/ 5/ 6C/ 6C(SP) (4-Stroke)	198	7.8	7	Aluminum	●	●	(S,L)	●	●	3R1B64514-1
	198	7.8	8	Aluminum	(S,L)	(S,L,UL)	●	(S,L)	●	3R1B64516-1
	200	7.9	9	Aluminum	●	●	●	●	●	369B64518-1

Model	Propeller Dia		Pitch	Material	Standard Propeller				Part Number	
	mm	in			M6/8B	M9.8B	MFS6A3	MFS8A3		MFS9.8A3
M6/ 8/ 9.8B (2-Stroke) & MFS8/9.8A3 (4-Stroke)	221	8.7	5	Aluminum	●	●	●	●	●	3V1B64510-0*
	216	8.5	6.5	Aluminum	●	●	(L)	●	●	3B2B64513-1
	226	8.9	7	Aluminum	(L,UL)	●	●	●	●	3B2B64514-1
	216	8.5	7	Aluminum	●	●	●	●	●	3V1B64514-0*
	216	8.5	7.5	Aluminum	●	(L,UL)	●	(S,L,UL)	(L,UL)	3B2B64515-1
	226	8.9	8.3	Aluminum	(S)	(S)	●	●	(S)	3B2B64517-1
	226	8.9	10	Aluminum	●	●	●	●	●	3B2B64519-1

● = Optional * = 4 Blades

Model	Propeller Dia		Pitch	Material	Standard Propeller					Part Number
	mm	in			M9.9/15D2	M18E2	MX15E2	MX18E2	MFS15/20D	
M9.9/15D2/ 18E2/ MX15/18E2 (2-Stroke) & MFS15/20D (4-Stroke)	234	9.2	6	Aluminum	●	●	●	●	●	362B64107-1
	234	9.2	7	Aluminum						362B64105-1
	254	10.0	7	Aluminum						3Z0B64514-3*
	241	9.5	8	Aluminum	(L,UL)	(UL)	(L)	(S,L,UL)	●	3BAB64516-1
	235	9.3	9	Aluminum	(S)	(S,L)	(S)		(L)	3BAB64518-1
	235	9.3	10	Aluminum	●	●	●	●	(S)	3BAB64521-1
MFS15/20D (4-Stroke)	235	9.3	11.5	Aluminum	●	●	●	●	●	3BAB64524-1

Model	Propeller Dia		Pitch	Material	Standard Propeller Size			Part Number
	mm	in			M25/30H	MX25/30H	MFS25/30C	
M25/30H/ MX25/30H (2-Stroke) & MFS25/30C (4-Stroke)	260	10.2	8	Aluminum	●	●	●	346B64106-5
	247	9.7	9	Aluminum	(UL)	(UL)	(UL)	3R0B64518-0
	247	9.7	10	Aluminum	●	(L)	●	3R0B64521-0
	249	9.8	11	Aluminum	(L)	●	(L)	3R0B64523-0
	249	9.8	12	Aluminum	●	(S)	●	3R0B64525-0
	244	9.6	13	Aluminum	(S)	●	(S)	3R0B64527-0
MFS25/30C (4-Stroke)	252	9.9	14	Aluminum	●	●	●	349B64529-1

● = Optional * = 4 Blades

Model	Propeller Dia		Pitch	Material	Standard Propeller Size						Part Number	
	mm	in			MX40/50D3	M40D2	M50D2	MD40B2	MD50B2	MFS40A		MFS50A
M40/50D2/ MX40/50D3 (2-Stroke) & MD40/ 50B2 (TLDI) & MFS40/50A (4-Stroke)	290	11.4	7	Aluminum	●	●	●	●	●	●	●	348B64108-1*
	311	12.2	9	Aluminum	●	●	●	●	●	●	●	3T5B64518-0
	290	11.4	11	Aluminum	●	(S,L,LL)	●	●	●	●	●	3T5B64523-0
	283	11.1	12	Aluminum	●	●	(S,L)	(S,L)	●	●	●	3T5B64525-0
	277	10.9	13	Aluminum	(S,L,LL)	●	●	●	(S,L)	(S,L)	●	3T5B64527-0
	279	11.0	14	Aluminum	●	●	●	●	●	●	(S,L)	3T5B64529-0
	278	11.0	15	Aluminum	●	●	●	●	●	●	●	3T5B64532-0
	279	11.0	16	Aluminum	●	●	●	●	●	●	●	3KYB64534-0
	280	11.0	17	Aluminum	●	●	●	●	●	●	●	3KYB64536-0

Model	Propeller Dia		Pitch	Material	Standard Propeller Size			Part Number
	mm	in			M60/70C/70CX/90A2	M115/140A2	MD115A2	
M60/70C/70CX/90A2/115/140A2 (2-Stroke) & MD115A2 (TLDI) MD75/90C2 (TLDI)	356	14.0	9	Aluminum	●	●	●	3HKB64518-0
	356	14.0	11	Aluminum	●	●	●	3HKB64527-0
	349	13.8	13	Aluminum	●	●	●	3HKB64527-0
	343	13.5	15	Aluminum	(L,UL)	●	●	3HKB64532-0
	337	13.3	17	Aluminum	●	(L,UL)	●	3HKB64536-0
	335	13.2	19	Aluminum	●	●	●	3HKB64541-0
MD75/90C2 (TLDI)	335	13.2	21	Aluminum	●	●	●	3HKB64545-0

● = Optional * = 4 Blades

Control Boxes

Our Side Mount and Binnacle Mount control boxes are designed to provide remote throttle & shift control for Tohatsu outboards.

Side Mount Remote Control Box

Designed for Tohatsu outboards. Standard features include a fast warm-up lever, Key type ignition switch, an emergency stop switch, choke switch, PTT Switch (as selected models) and 6.3M (21FT) wiring harness.

Part Number	Description	Models
3ACQ84330-0	RC5A	MFS25/30 (4-Stroke) M40-90 (2-Stroke) with PTT
3B7Q84340-3	RC5B	MFS15-30 (4-Stroke) M40-90 (2-Stroke) without PTT
3B7Q84350-3	RC5C	MFS8/9.8 (4-Stroke) M8B-30H (2-Stroke) with electric starter
3B7Q84360-1	RC5D	MFS4-30 (4-Stroke) M4C-30H (2-Stroke) without electric starter
3E0Q84370-0	RC5E	M115/120/140A2 (2-Stroke)
3GFQ84500-0	RC5F	MFS40/50A (4-Stroke) MD30/40/50/75/90/115 (TLDI)



Single Top Mount Controls (Right Hand Lever)

Single Top Mount Controls (Left Hand Lever)

Dual Top Mount Controls

Flush Mount Controls

TOP MOUNT CONTROLS

Part Number	Description
3U1-84490-0	Single Top Mount Controls (Right Hand Lever)
3T1-84490-0	Single Top Mount Controls (Left Hand Lever)
3U1-84540-0	Dual Top Mount Controls

FLASH MOUNT CONTROLS

Part Number	Description
3U1-84600-0	Flush Mount Controls (SL3F)

Note: For detailed information of Tohatsu Parts & Accessories, Please contact your local dealer.

Rigging Kits



Side Mount type Pre-rig kits

Part Number	Applicable Models
3GLQ84550-1	TLDI Models 2009(XK)~
3KYQ84555-0	MFS40/50A



TOP/Dual Binnacle type Pre-rig kits

Part Number	Applicable Models
3GM-84550-1	TLDI Models 2009(XK)~
3KY-84556-0	MFS40/50A

Specifications

Four Stroke									
Model	BFT250	BFT225	BFT200	BFT150	BFT115	BFT90	BFT75	BFT60	BFW60
No. of Cylinder	6			4			3		
Output	250ps (183.9 kw)	225ps (165.5 kw)	200ps (147.1 kw)	150ps (110.3 kw)	115ps (84.6 kw)	90ps (66.2 kw)	75ps (55.2 kw)	60ps (44.1 kw)	
Displacement	3,583 cm ³ [218.6 cu.in]	3,471 cm ³ [211.7 cu.in]		2,354 cm ³ [143.6 cu.in]		1,496 cm ³ [91.3 cu.in]		998 cm ³ [61.0 cu.in]	
Bore x Stroke	89 x 96 mm [3.5 x 3.8 in]	89 x 93 mm [3.5 x 3.7 in]		87 x 99 mm [3.4 x 3.9 in]		73 x 89.4 mm [2.9 x 3.5 in]		73 x 79.5 mm [2.9 x 3.1 in]	
Max. RPM Range	5,300 - 6,300 r/min	5,000 - 6,000 r/min			4,500 - 6,000 r/min	5,300 - 6,300 r/min	5,000 - 6,000 r/min		
Starting	Electric								
Control Type	Remote Control					Remote Control or Tiller Handle			
Gear Shift	Forward - Neutral - Reverse								
Gear Ratio	2.00:1	1.86:1		2.14:1		2.33:1		2.07:1	2.33:1
Transom Height	25"		20", 25"				20"		
Fuel	Unleaded Gasoline (87 Pump Octane or higher)								
Recommended Oil	API Standard (SG, SH, SJ) SAE 10W-30								
Fuel Tank	Optional								
Weight*	284 kg (625 lbs)	272 kg (600 lbs)	265 kg (584 lbs)	217 kg (478 lbs)		166 kg (366 lbs)	165 kg (364 lbs)	110 kg (243 lbs)	119 kg (262 lbs)
Alternator Output	12V, 1080W, 90A			12V, 660W, 55A		12V, 528W, 44A		12V, 264W, 22A	
Model	BFT250	BFT225	BFT200	BFT150	BFT115	BFT90	BFT75	BFT60	BFW60
PGM-FI®	S	S	S	S	S	S	S	S	S
BLAST®	S	S	S	S	S	S	S	S	S
ECOMO®	S	S	S	S	S	S	S	S	S
Variable Valve Timing & Lift Control	S	S	-	S	-	S	-	-	-
Compatible with TOCS (Tohatsu Onboard Communication System)	S	S	S	S	S	S	S	S	S
Power Thrust Gear Case	-	-	-	-	-	-	-	-	S

* Weight Specification is based on the lightest version.

** Alternator on Certain Models

LEGEND S ••••• Standard

Specifications are subject to change without notice.

Four Stroke

Model	MFS50	MFS40	MFS30	MFS25	MFS20	MFS15	MFS9.8	MFS8	MFS6Z	MFS6 SP	MFS6	
No. of Cylinder	3						2				1	
Output	50 ps (36.8 kw)	40 ps (29.4 kw)	30 ps (22.1 kw)	25 ps (18.4 kw)	20 ps (14.7 kw)	15 ps (11 kw)	9.8 ps (7.2 kw)	8 ps (5.9 kw)	6 ps (4.4 kw)	6 ps (4.4 kw)		
Displacement	866 cm ³ (52.9 cu.in)		526 cm ³ (32.09 cu.in)		351 cm ³ (21.41 cu.in)		209 cm ³ (12.8 cu.in)		123 cm ³ (7.5 cu.in)			
Bore x Stroke	70 x 75 mm (2.4 x 2.36 in)		61 x 60 mm (2.4 x 2.36 in)		61 x 60 mm (2.4 x 2.36 in)		55 x 44 mm (2.17 x 1.73 in)		59 x 45 mm (2.32 x 1.77 in)			
Max. RPM Range	5,000 - 6,000 r/min		5,250 - 6,250 r/min	5,000 - 6,000 r/min	5,400 - 6,100 r/min	5,000 - 6,000 r/min						
Starting	Electric		Electric & Manual or Manual			Electric & Manual or Manual				Manual		
Control Type	Remote Control or Tiller Handle				Remote Control or Tiller Handle				Tiller Handle or Opt. Remote Control			
Gear Shift	Forward - Neutral - Reverse											
Gear Ratio	2.08:1		2.17:1		2.15:1		2.08:1		2.15:1			
Propeller Selection Range	7" - 17"		8" - 14"		6" - 11.5"		5" - 10"		6"		6" - 9"	
Transom Height	15", 20"		15", 20"		15", 20"		15", 20", 25"	15", 20"		20", 25"	15", 20"	
Fuel	Unleaded Gasoline (87 Octane)						Unleaded Gasoline (87 Octane)					
Recommended Oil	Tohatsu 4stroke Outboard Motor Oil						Tohatsu 4 stroke Outboard Motor Oil					
Fuel Tank	25 L (6.6 US Gal.) Separate Tank				12 L (3.2 US Gal.) Separate Tank				12 L (3.2 US Gal.) Separate Tank	12 L (3.2 US Gal.) Separate Tank and/or 1.15 L (0.3 US Gal.) Integral Tank		
Weight*	95 kg (209 lbs)		71.5 kg (158 lbs)		52 kg (114.6 lbs)		37 kg (81.5 lbs)		26.6 kg (59 lbs)		25.6 kg (57 lbs)	
Alternator Output	12V, 252W, 21A		12V, 180W, 15A		12V, 145W, 12A		12V, 80W, 6A**		12V, 60W, 5A		Opt. 12V, 60W, 5A	
Compatible with TOCS	S	S	S	S	-	-	-	-	-	-	-	

* Weight Specification is based on the lightest version.

** Alternator on Certain Models

LEGEND S ••••• Standard

Specifications are subject to change without notice.

Four Stroke

Model	MFS5	MFS4	MFS3.5	MFS2.5
No. of Cylinder	1			
Output	5 ps (3.7 kw)	4 ps (2.9 kw)	3.5 ps (2.6 kw)	2.5 ps (1.8 kw)
Displacement	123 cm ³ (7.5 cu.in)		86 cm ³ (5.2 cu.in)	
Bore x Stroke	59 x 45 mm (2.32 x 1.77 in)		55 x 36 mm (2.17 x 1.42 in)	
Max. RPM Range	4,500 - 5,500 r/min		5,000 - 6,000 r/min	4,500 - 5,500 r/min
Starting	Manual			
Control Type	Tiller Handle or Opt. Remote Control		Tiller Handle	
Gear Shift	Forward - Neutral - Reverse			
Gear Ratio	2.15:1			
Propeller Selection Range	6" - 9"		4.5" - 7"	
Transom Height	15", 20"			
Fuel	Unleaded Gasoline (87 Octane)			
Recommended Oil	Tohatsu 4 stroke Outboard Motor Oil			
Fuel Tank	12 L (3.2 US Gal.) Separate Tank and/or 1.15 L (0.3 US Gal.) Integral Tank		1 L (0.26 US Gal.) Integral Tank	
Weight*	25.6 kg (57 lbs)	26.1 kg (58 lbs)	18.4 kg (41 lbs)	
Alternator Output	Opt. 12V, 60W, 5A		N/A	
Compatible with TOCS	-	-	-	-

* Weight Specification is based on the lightest version.

** Alternator on Certain Models

LEGEND S ••••• Standard

Specifications are subject to change without notice.

TLDI

Model	MD115	MD90	MD75	MD50	MD40	MD30
No. of Cylinder	4	3				
Output	115ps (84.6 kw)	90 ps (66.2 kw)	75 ps (56 kw)	50 ps (36.8 kw)	40 ps (29.4 kw)	30 ps (22.1 kw)
Displacement	1768 cm ³ (107.9 cu.in)	1267 cm ³ (77.3 cu.in)		697 cm ³ (42.5 cu.in)		
Bore x Stroke	88 x 72.7 mm (3.46 x 2.86 in)	86 x 72.7 mm (3.39 x 2.86 in)		68 x 64 mm (2.68 x 2.52 in)		
Max. RPM Range	5,150 - 5,850 r/min					4,750 - 5,750 r/min
Starting	Electric					
Control Type	Remote Control			Remote Control or Tiller Handle		
Gear Shift	Forward - Neutral - Reverse					
Gear Ratio	2.0:1	2.3:1		1.85:1		
Propeller Selection Range	9" - 21"	11" - 21"		7" - 17"		
Transom Height	20", 25"		15", 20"		20"	
Fuel	Unleaded Gasoline (87 Octane)					
Recommended Oil	Tohatsu Premium Outboard Motor Oil					
Fuel Tank	Optional			25 L (6.6 US Gal.) Separate Tank		
Weight*	178 kg (392 lbs)	150 kg (331 lbs)		93.5 kg (205.7 lbs)		94.5 kg (208 lbs)
Alternator Output	12V, 490W, 40A			12V, 280W, 23A		
Compatible with TOCS	S	S	S	S	S	S



UK DISTRIBUTOR
Tohatsu Marine,
Portmore,
Lymington,
Hampshire.
SO41 5RF
www.tohatsu.co.uk
sales@tohatsu-uk.net

Dealer Stamp